

# Key Health Issue Background Information

**WNC Health Network** is an alliance of stakeholders working together, with partners, to improve health and healthcare.

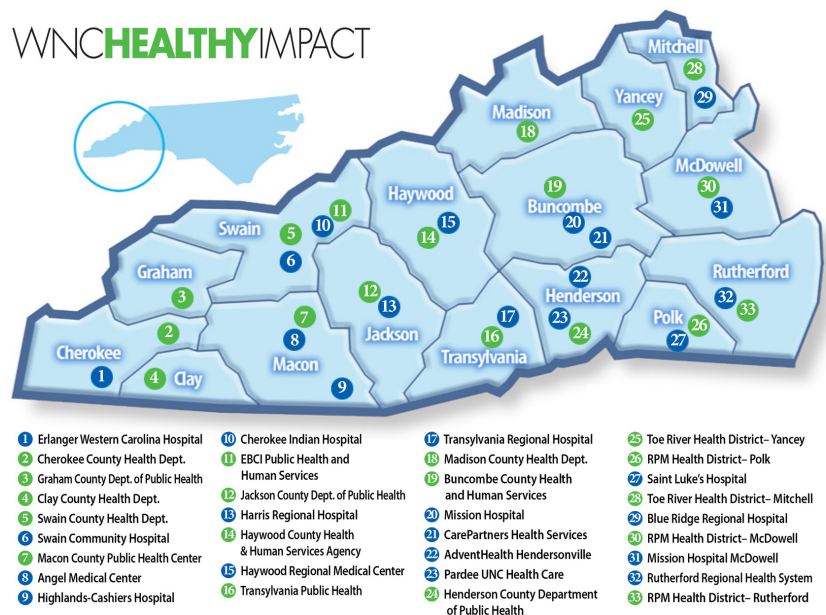
In over 25 years of partnership, we have worked together across facilities and systems to support best practices and innovate towards excellence.

Together, we contribute to healthy and thriving communities and care systems by:

- Strengthening local and regional capacity to improve health
- Aligning and connecting key partners for greater impact
- Focusing on measurable results

## ABOUT WNC HEALTHY IMPACT

**WNC Healthy Impact** is a partnership and coordinated process between hospitals, public health agencies, and key regional partners in western North Carolina, working towards a vision of improved community health. We are working together locally and regionally on a community health improvement process to assess health needs, develop collaborative plans, take coordinated action, and evaluate progress and impact. We've been doing this together successfully for more than 8 years, becoming a national leader in the field.



## WHAT IS CHA?

**Community health assessment (CHA)** is a process which results in a public report that outlines:

- (1) Current health indicators and status of the community
- (2) Changes in the community
- (3) Desired changes to reach a community's health-related results

## HOW IT WORKS

### Community Survey *Primary Data*

- Ran March 2018 through June 2018 in 17 counties in WNC
- Assess specific issues of concern in each county
- Hear from community members about priorities and concerns

### Online Key Informant Survey *Primary Data*

- Communities share a list of recommended participants (physicians, public health representatives, social service providers, community leaders)
- Key informants are chosen based on their ability to identify primary concerns of the populations with whom they work and within the community
- Input solicited from key informants

### Public Health Data *Secondary Data*

- Local: County Health Data Books, Behavioral Risk Factor Surveillance System, Vital Statistics unit, Cancer Registry
- State: NC DETECT, NC Division of Public Health (DPH) Epidemiology Section, Nutrition Services, Division of Mental Health, Developmental Disabilities and Substance Abuse Services
- National: US Census, American Community Survey, CDC, National Center for Health Statistics

### Regional Prioritization Process *Data Analysis*

- Beginning in the fall of 2018 WNCHN analyzed the data using the following criteria to identify significant health issues in our region:
  - Data reflects a concerning trend related to size or severity
  - Significant disparities exist
  - Issue surfaced as a high regional concern
  - WNC data deviates notably from the state, nation, or benchmark

## THE RESULT

This process resulted in the identification of ten key regional health issues: asthma, cardiovascular disease, COPD, diabetes, mental health, obesity, oral health, preterm birth, substance misuse, and unintentional falls.

### We Welcome Feedback!

Please contact us if you have questions, feedback, or suggestions for additional information to include. Download the 2018 Regional Data Workbook [here](#).



Visit [www.wnchn.org](http://www.wnchn.org) to learn more.