

Support Provided by WNC Healthy Impact

Core Support

WNC Healthy Impact works with each county in western North Carolina to make excellence in community health improvement accessible to everyone.

The result we have in mind is that ***every community in WNC has the capacity to improve the health of their residents.***

WNC Healthy Impact supports this result by providing **a core set of services and support** related to community health improvement (*view the cycle to the right*) to every hospital and health department in the 16-county region.



PHASE 1

- Collect, analyze, & report county-level health data for entire region:
 - * Primary, quantitative community health data
 - * Primary, qualitative key informant survey data
 - * Secondary data on 200+ health indicators
- Local and regional data maps
- Offer training, tools and templates for:
 - * Additional local data collection and analysis
 - * Local health issue prioritization
- Establish regional health issue priorities for western NC

PHASE 2

- Offer training, technical assistance, & templates for community strategic planning processes
- Align templates & tools with NC Department of Public Health and IRS guidance/ requirements for community strategic planning
- Provide hands-on support to ensure that community strategic plans are measurable & able to demonstrate progress

PHASE 3

- Support local communities to effectively address regional priorities
- Offer guidance for planning & evaluation of local priority health issues
- Provide training & support to identify, improve, monitor, & publicly report community-level performance measures
- Create & help communities use online, real-time data Scorecards for priority health issues
- Host regional convenings on priority issues

ONGOING

- Convene regional work groups
- TA/Coaching for performance measures
- Support access to high-quality data, peer connectivity, & expert technical assistance
- Offer training and coaching to hospitals and public health departments to use Results-Based Accountability™ and the Clear Impact Scorecard platform

Additional Support

You sometimes may need extra support to fill a gap or help realize your vision.

When additional supports are needed, WNC Health Network staff can offer additional types of support that health departments and community partners may be able to purchase directly to get you to your local results that you have envisioned.

PHASE 1

- Help conduct additional local data collection, management, analysis, and reporting (beyond what is included in the WNC Healthy Impact regional primary & secondary dataset)
- Present community health data to local partners
- Facilitate local health issue prioritization meetings
- Write Community Health Assessment reports

PHASE 2

- Facilitate cross-sector community strategic planning meetings

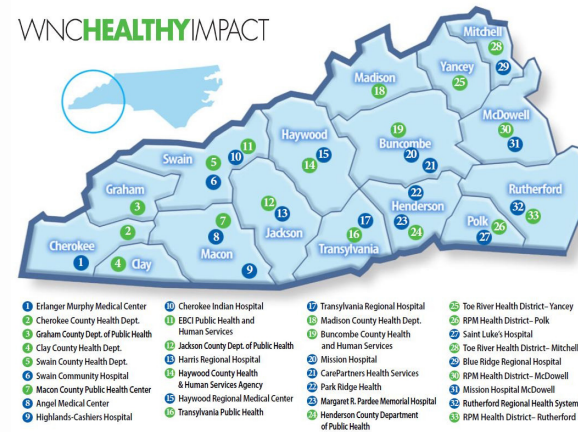
PHASE 3

- Help plan and conduct evaluation of local health priority issue initiatives

ONGOING

- Support local listening sessions or focus groups by helping plan, facilitate, & report findings
- Conduct tailored trainings on topics within WNC Healthy Impact core support (including RBA, how to conduct listening sessions, & others)
- Provide health communications support (for example, identify evidence-based communications campaigns, or help shape or review strategy around health priorities or specific health topics)
- ...and other services to help you achieve the capacity you need

WNC **HEALTHY** IMPACT



WHO WE ARE

WNC Health Network, Inc. is an alliance of hospitals working together, and with partners, to improve health and healthcare.

In over 20 years of partnership, our staff and member hospitals have worked together across facilities and systems to support best practices and innovate towards excellence.

WNC Healthy Impact - which is housed and coordinated by WNC Health Network - is a partnership and coordinated process between hospitals, public health agencies, and key regional partners in western North Carolina, working towards a vision of improved community health.

We work together locally and regionally on a community health improvement process to assess health needs, develop collaborative plans, take coordinated action, and evaluate progress and impact.

Learn more at www.wnchn.org

CONTACT US

Emily Kujawa, Project Manager & Improvement Specialist:

emily.kujawa@wnchn.org
828-398-4609

"The greatest value of WNC Healthy Impact is the technical assistance and support to create and use consistent, efficient, innovative products and processes across WNC."

-Jan Shepard, Health Director, Buncombe County HHS

"WNC Healthy Impact's is extremely valuable, and has allowed me to take ownership of my position at my agency and feel more confident and prepared when working with my community."

-Janelle Messer, Health Education Supervisor, Jackson County Department of Public Health



WNC
HEALTH
NETWORK

Providers Working Together