

# WNC HEALTHY IMPACT

**WNC Healthy Impact** is a partnership and coordinated process between **hospitals, public health agencies, and key regional partners** in western North Carolina working towards a vision of improved community health. We work together locally and regionally to **assess health needs, develop collaborative plans, take action, and evaluate progress and impact.**

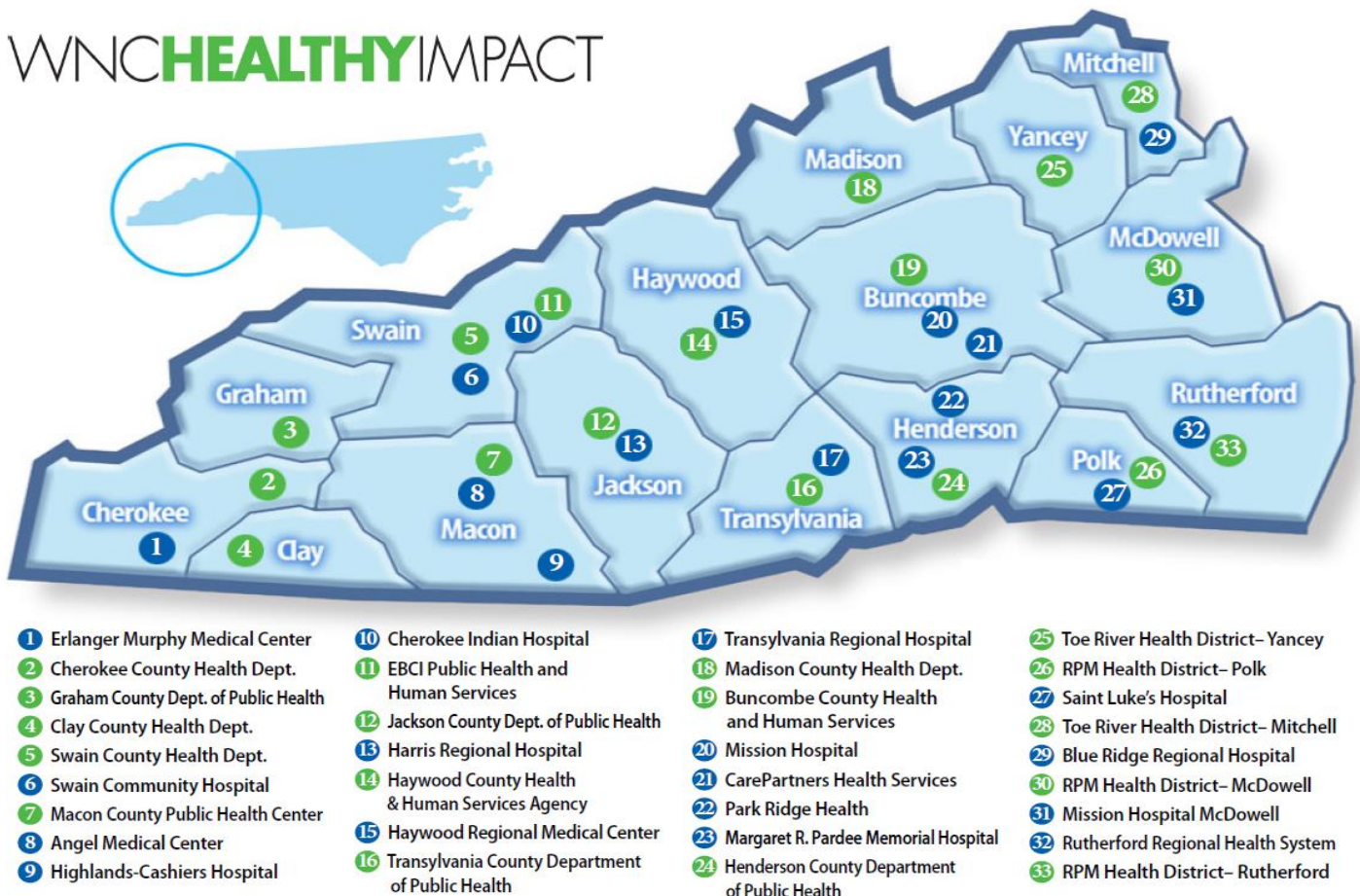
This regional initiative is designed to **support and enhance local efforts** by:

- Standardizing and conducting data collection,
- Creating communication and report templates and tools,
- Encouraging collaboration,
- Providing training and technical assistance,
- Addressing regional priorities, and
- Sharing evidence-based and promising practices.



## Regional Structure & Partners

This innovative regional effort is supported by financial and in-kind contributions from hospitals, public health agencies, and partners, and is coordinated by **WNC Health Network**. Current efforts to infuse Results-Based Accountability™ (RBA) throughout this process are supported by a grant from The Duke Endowment.



## WNC Healthy Impact Goals

- **Enhance partnerships** between hospitals and public health agencies.
- **Improve efficiency, quality, and standardization** of community health assessment data collection and reporting of data and plans.
- **Encourage strategic investment** of community resources to support priority health issues.
- **Catalyze and coordinate action** among existing and new assets and initiatives to address priority health needs.
- **Monitor results** to improve process, quality, and health outcomes.
- **Promote accountability** of hospitals and public health agencies through meeting community health improvement requirements at the state and national levels.



**Community Health Improvement Process**

## Support Provided to WNC Healthy Impact Members

### Phase 1

- Collect & share regional CH(N)A dataset
- Training & support for:
  - Data collection & analysis
  - Prioritization and community strategic planning on health priorities

### Phase 2

- Training & support for:
  - Community health improvement planning, hospital implementation strategy development, and CHIP
  - Performance measure improvement

### Phase 3

- Training & support for:
  - State of the County Health (SOTCH) reports
  - Performance measure identification and improvement
- Regional Priority Convenings

### Ongoing

- Peer learning, technical assistance, & coaching
- Regional workgroups and technical assistance/coaching for Scorecard and Performance Measures
- Training & support for:
  - Performance measure identification and improvement
  - RBA and specific use of RBA and Scorecard

**For more information about WNC Healthy Impact, and to review regional & local reports and plans, please visit us online at: [www.wnchealthyimpact.com](http://www.wnchealthyimpact.com)**